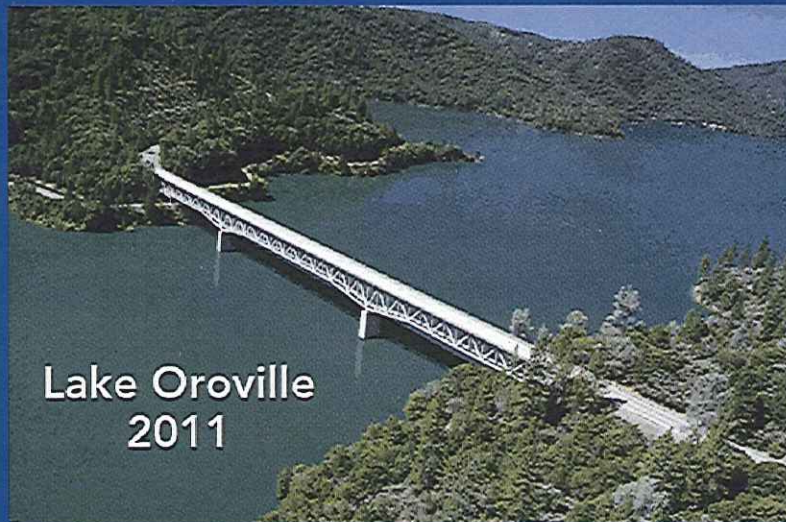


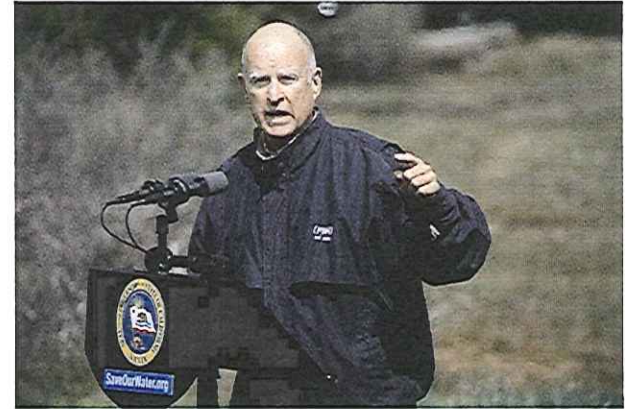


Town Hall Meeting California Drought 2015



State Mandates on Water Providers

- Governor's mandate adopted on May 5, 2015.
- Serrano mandated to cut 36% water consumption.
- **\$10,000 a day** penalty if the District does not comply with the mandate.





Level 2 Requirements

- Outdoor watering is limited to 2 days per week.
- Limits on water hours: Watering is prohibited from 10:00 a.m. to 4:00 p.m.
- Limit on watering duration: Limited to no more than 15 minutes per station, twice per week.
- Excessive water flow/runoff is prohibited.
- Washing down hard or paved surfaces is prohibited.



Level 2 Requirements

- Obligation to fix leaks, breaks or any other malfunctions within 48 hours.
- Refilling of more than 1 foot and initial filling of swimming pools or outdoor spas with potable water is prohibited.
- District water is prohibited in the use of any water fountain or ornamental lake or pond. Ponds with aquatic life are exempt such as Koi and turtle ponds.



Level 2 Requirements

- Wash vehicles only with a bucket or a hose with shut-off nozzle.
- Drinking water served only upon request.

Water Supply Allocation Declaration

- 🔹 **Metropolitan Board of Directors - April 14, 2015**
 - 🔸 Implemented Stage Level 3 to manage supplies & storage
 - 🔸 Stage Level 3 = roughly 15% reduction on imported deliveries

- 🔹 **MWDOC Board of Directors - April 15, 2015**
 - 🔸 Implemented Stage Level 3

- 🔹 **Allocation in Effect for a 12-month period: July 1, 2015 to June 30, 2016**





Operation Costs

- Current Rate: \$32.21 fixed cost per meter.
 - \$3.01 per unit commodity rate
- Current Amended Budget Revenue: \$5.7M
- Current Amended Budget Expenses: \$6.3M

State Mandates 36% Water Consumption Reduction

- Deficit: (\$600,000) 2014-2015 Year
- Minimum Rate Increase:
 - \$32.21 fixed cost per meter
 - \$3.75 per unit commodity rate

Penalty Fee Structure

Proposed Penalty Structure (Draft)

Penalties are calculated as follows: the subtotal of the water bill is multiplied by the percentage over baseline multiplied by 1.5 then added to the subtotal.

Assumption: Five units of water included with fixed meter charge.

Usage the same as 2013 (56% over baseline)

	Meter Charge	Rate	2013 June Usage	New Baseline	June 2015 Usage	Monthly Bill	% over baseline	\$ % over Baseline	Multiplier 1.5	Penalty	Grand Total
Low User	\$32.21	\$3.01	35	22	35	\$122.34	0.56	\$ 68.51	1.50	\$102.77	\$225.11
Average User	\$32.21	\$3.01	60	38	60	\$197.47	0.56	\$ 110.58	1.50	\$165.88	\$363.35
High User	\$32.21	\$3.01	150	96	150	\$467.94	0.56	\$ 262.05	1.50	\$393.07	\$861.01

Assumption: Five units of water included with fixed meter charge.

Usage 20% over baseline

	Meter Charge	Rate	2013 June Usage	New Baseline	June 2015 Usage	Monthly Bill	% over baseline	\$ % over Baseline	Multiplier 1.5	Penalty	Grand Total
Low User	\$32.21	\$3.01	32	20	25	\$91.13	0.20	\$18.23	1.50	\$27.34	\$118.47
Average User	\$32.21	\$3.01	60	38	46	\$155.86	0.20	\$31.17	1.50	\$46.76	\$202.62
High User	\$32.21	\$3.01	150	96	115	\$363.91	0.20	\$72.78	1.50	\$109.17	\$473.09

Assumption: Five units of water included with fixed meter charge.

Usage 10% over baseline

	Meter Charge	Rate	2013 June Usage	New Baseline	June 2015 Usage	Monthly Bill	% over baseline	\$ % over Baseline	Multiplier 1.5	Penalty	Grand Total
Low User	\$32.21	\$3.01	32	20	23	\$84.97	0.10	\$8.50	1.50	\$12.75	\$97.71
Average User	\$32.21	\$3.01	60	38	42	\$144.30	0.10	\$14.43	1.50	\$21.65	\$165.95
High User	\$32.21	\$3.01	150	96	106	\$335.02	0.10	\$33.50	1.50	\$50.25	\$385.27

Assumption: Five units of water included with fixed meter charge.

Usage 0% over baseline

	Meter Charge	Rate	2013 June Usage	New Baseline	June 2015 Usage	Monthly Bill	% over baseline	\$ % over Baseline	Multiplier 1.5	Penalty	Grand Total
Low User	\$32.21	\$3.01	32	20	20	\$78.80	0.00	\$0.00	0.00	\$0.00	\$78.80
Average User	\$32.21	\$3.01	60	38	38	\$132.74	0.00	\$0.00	0.00	\$0.00	\$132.74
High User	\$32.21	\$3.01	150	96	96	\$306.12	0.00	\$0.00	0.00	\$0.00	\$306.12



Achieving the 36% Reduction

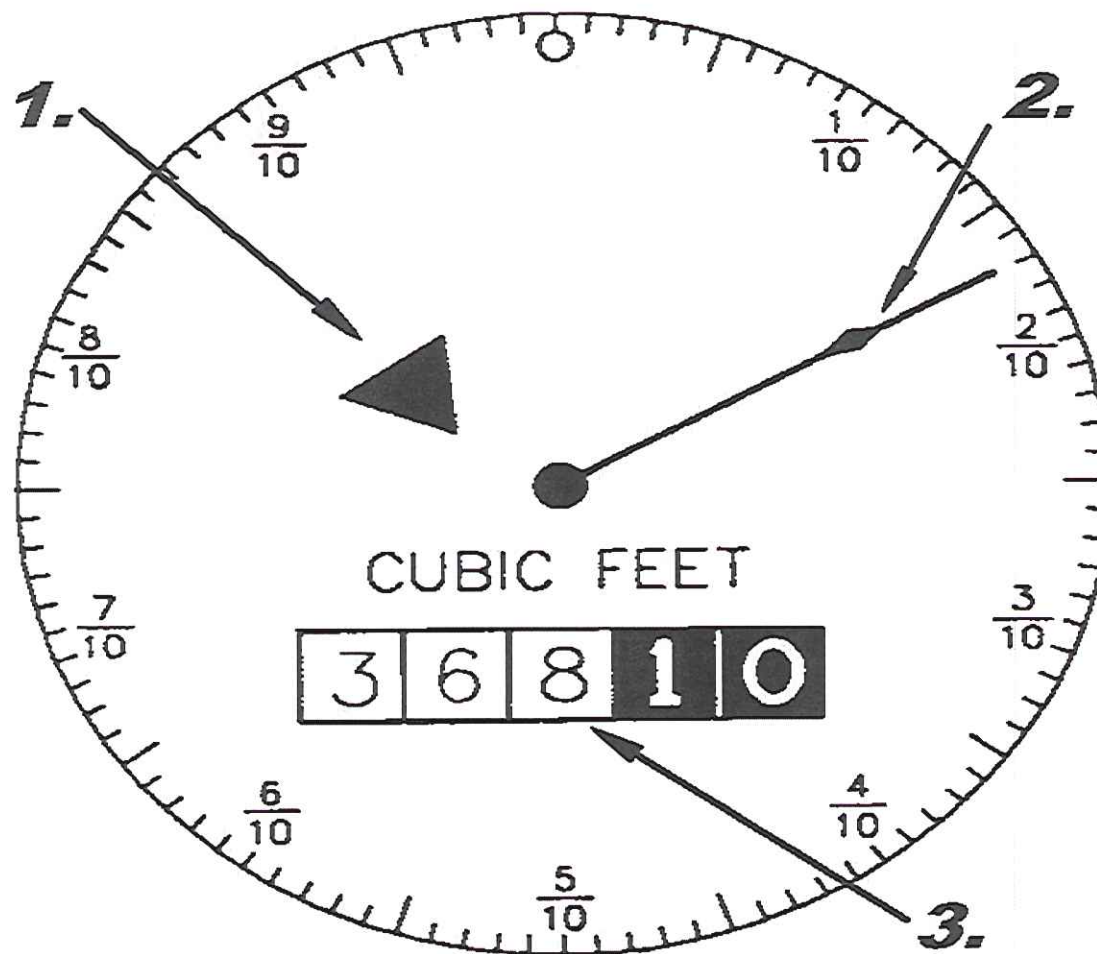
- This reduction will be based against 2013 usage on a monthly basis.
- The District will normalize the data to provide resident's with their daily usage to account for difference in the number of days in each billing cycle.



Achieving the 36% Reduction

- Residents will be notified through a mailing scheduled for late May of their 2013 usage and what the 36% reduction will represent in order to avoid potential penalties.
- Customers will receive a reminder on their monthly statements of what their usage should be for the forthcoming month to achieve the 36% reduction.
- Consideration for residents that were not living in their home in 2013, home undergoing extensive renovation, etc.

How to Read your Meter





How to Read your Meter

- #1 – Low flow indicator. This will tell you if you have a leak somewhere on your property if the low flow indicator is moving and no water is running in your home.
- #2 – Dial. One full rotation equals 1 cubic foot of water or 7.48 gallons of water.
- #3 – Odometer records the total water use in units. One unit equals 100 cubic feet of water which also equals 748 gallons of water.



How to Read your Meter

- Read the odometer and write it down completely (not the red numbers). Write down the date read.
- After seven days, read the odometer again and write down the date again.
- Subtract the first reading from the second reading and this is your water use in cubic feet during that period.
- Multiply that water use by 748 to equal your water use in gallons during that period.
- Divide the water use in gallons by the number of days between the readings and this is your average gallons per day during that period.

Water Conservation Specialist

- Steven Sweeney
 - A newly created position in response to the drought.
 - Designed to provide customers with a concierge level service.
 - Dedicated to seizing all conservation measures, including hands on help adjusting sprinklers and applying for rebates offered by the Municipal Water District of Orange County.





Contact

- For more information, please contact Serrano Water District at:

714-538-0079

serranowaterdistrict@yahoo.com

steve@serranowater.org

- Also, please visit our website at:

www.serranowater.org